

Getting started with

Rasuvo[™]
methotrexate
injection

For treating RA, pJIA, and psoriasis with a single, weekly injection under the skin

What is Rasuvo (methotrexate) injection?

Rasuvo (methotrexate) injection is a single-dose auto-injector containing a prescription medicine, methotrexate. Methotrexate is used to:

- Treat certain adults with severe, active rheumatoid arthritis, and children with active polyarticular juvenile idiopathic arthritis (pJIA), after treatment with other medicines including non-steroidal anti-inflammatory (NSAIDs) have been used and did not work well.
- Control the symptoms of severe, resistant, disabling psoriasis in adults when other types of treatment have been used and did not work well.

Rasuvo should not be used for the treatment of cancer.

Rasuvo should not be used for the treatment of children with psoriasis.

Rasuvo is available in doses of 7.5, 10, 12.5, 15, 17.5, 20, 22.5, 25, 27.5, and 30 mg. Your doctor will prescribe a different way to take methotrexate if you need to take methotrexate by mouth or in some other way.

Important Safety Information, including Boxed Warning, for Rasuvo

What is the most important information I should know about Rasuvo?

This product includes the following Boxed Warning:

Rasuvo can cause serious side effects that can lead to death, including:

Organ system toxicity. People who use methotrexate for the treatment of cancer, psoriasis, or rheumatoid arthritis, have an increased risk of death from organ toxicity.

Please see additional Important Safety Information, including Boxed Warning, continued on next page and full Important Safety Information on pages 10-11.

Please see Patient Information in pocket for complete information about Rasuvo.

Important Safety Information, Including Boxed Warning

Boxed Warning (continued)

Types of organ toxicity can include: gastrointestinal, nerve, bone marrow, lung, liver, kidneys, immune system, and skin.

Your doctor will do blood tests and other types of tests before you take and while you are taking Rasuvo to check for signs and symptoms of organ toxicity. Call your doctor right away if you have any of the following symptoms of organ toxicity: vomiting, neck stiffness, diarrhea, paralysis, mouth sores, irritability, fever, sleepiness, confusion, problems with coordination, weakness, dry cough, temporary blindness, trouble breathing, seizures, severe skin rash, headache, and back pain.

Women who are pregnant are at increased risk for death of the baby and for birth defects in the baby. Women who are pregnant or who plan to become pregnant must not take Rasuvo. A pregnancy test should be performed before starting Rasuvo. Contraception should be used by both females and males while taking Rasuvo. Pregnancy should be avoided if either partner is receiving Rasuvo:

- for a minimum of 3 months after treatment with Rasuvo for males.
- during and for at least 1 menstrual cycle after treatment with Rasuvo for females.

What are the possible side effects of Rasuvo?

Rasuvo may cause serious side effects, including:

- **Fertility problems.** Methotrexate, the active ingredient in Rasuvo, may affect your ability to have a baby. Males may have a decreased sperm count, and females may have changes to their menstrual cycle. This can happen while taking Rasuvo and for a short period of time after you stop.
- **Certain cancers.** Some people who have taken methotrexate have had a certain type of cancer called Non-Hodgkin's lymphoma and other tumors. Your doctor may tell you to stop taking Rasuvo if this happens.
- **Tissue and bone problems.** Taking methotrexate while having radiation therapy may increase the risk of your tissue or bone not receiving enough blood. This may lead to death of the tissue or bone.

Common side effects of Rasuvo include: nausea, stomach pain, indigestion (dyspepsia), mouth sores, and rash.

Who should not take Rasuvo?

Do not take Rasuvo if you:

- Are pregnant or planning to become pregnant
- Are breastfeeding; Rasuvo can pass into your breast milk and may harm your baby.
- Have alcohol problems (alcoholism)
- Have liver problems
- Have problems fighting infection (immunodeficiency syndrome)
- Have been told you have (or think you have) a blood disorder, such as low levels of white blood cells, red blood cells (anemia), or platelets
- Have had an allergy to methotrexate or any of the ingredients in Rasuvo

What should I tell my doctor before taking Rasuvo?

Before you take Rasuvo, tell your doctor if you have any other medical conditions. Tell your doctor about all of the medicines you take, including prescription medicines, over-the-counter medicines, vitamins, and herbal supplements.

Rasuvo may affect how other medicines work, and other medicines may affect how Rasuvo works, causing side effects. Ask your doctor or pharmacist for a list of medicines if you are not sure.

Tell your doctor if you have any side effect that bothers you or that does not go away. These are not all the possible side effects of Rasuvo. For more information, ask your doctor or pharmacist.

For additional information about Rasuvo, please refer to the Patient Information Leaflet and Instructions for Use, which can be found at www.rasuvo.com or call 1-855-33MEDAC (1-855-336-3322).

You are encouraged to report negative side effects of prescription drugs to the FDA. Visit www.fda.gov/medwatch, or call 1-800-FDA-1088.

Please see additional Important Safety Information, including Boxed Warning, on cover, and full Important Safety Information on pages 10-11. Please see Patient Information in pocket for complete information about Rasuvo.

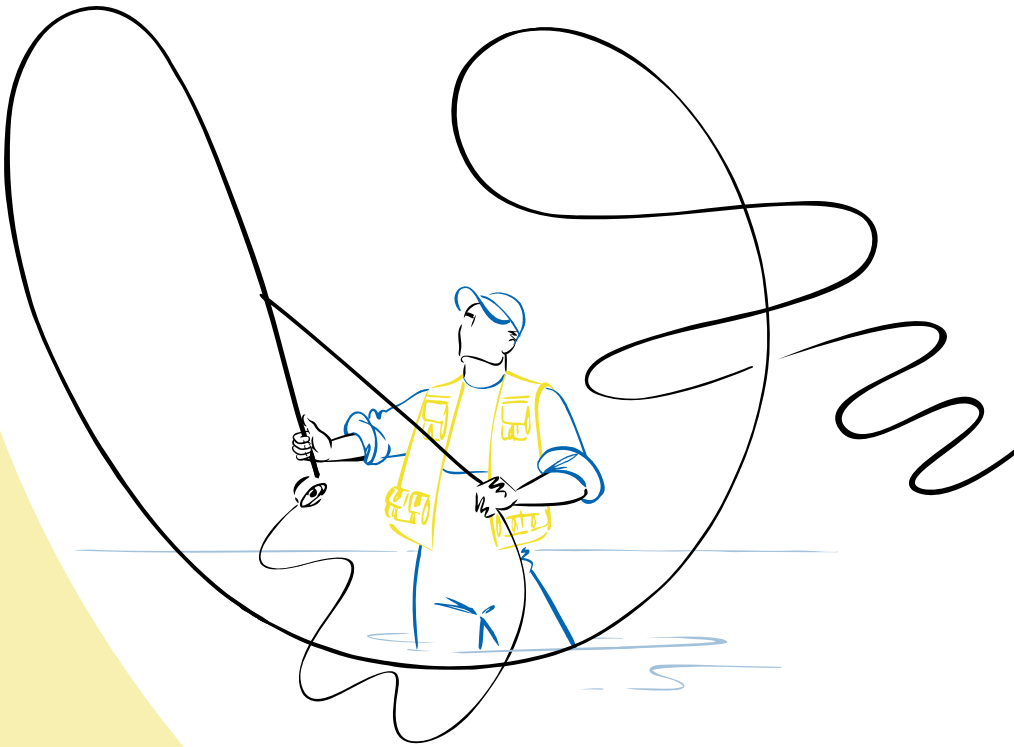
Rasuvo[™]
methotrexate
injection
Reliability Redefined

Introduction

The goal of this brochure is to provide you with information for getting started with Rasuvo™ (methotrexate) injection, a treatment option for RA, pJIA, and psoriasis. It will cover what Rasuvo is, how to use it, what side effects may occur, and other important information you should consider.

Advantages of Rasuvo

One treatment option for RA, the drug methotrexate, is currently the most frequently used RA drug in the world. Patients who take methotrexate by swallowing a pill (orally) may not respond well because of side effects. Patients who switch from methotrexate taken by a pill to methotrexate taken by injection (subcutaneously) may experience benefits. You may experience fewer certain side effects and a better response to treatment.



Important Information to know about Rasuvo

Serious side effects, including death, in patients taking Rasuvo include organ system toxicity and increased risk of death or birth defects in the baby when taken by a pregnant woman. Other serious side effects include fertility problems, certain cancers, and tissue and bone problems. The most common side effects of Rasuvo are nausea, stomach pain, indigestion, mouth sores, and rash.



Please see full Important Safety Information, including Boxed Warning, on pages 10-11. Please see Patient Information in pocket for complete information about Rasuvo.

Rasuvo[™]
methotrexate
injection
Reliability Redefined

Designed with patients in mind

Rasuvo™ (methotrexate) injection is a patient friendly option for taking methotrexate by injection under the skin. Rasuvo comes as a prefilled auto-injector, eliminating the need to use a vial, needle, and syringe preparation.



Rasuvo is available in more doses than any other option for taking methotrexate by injection under the skin. This makes it easy for your doctor to find the dose that is right for you throughout the course of your treatment.



Each Rasuvo dosage amount is color coded for easy identification.

Rasuvo offers 10 dosage strengths, more than any other subcutaneous methotrexate delivery system.

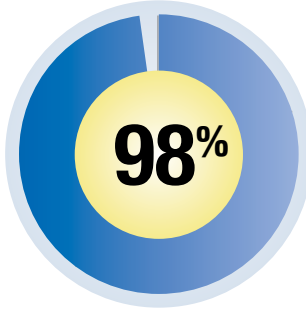
Patients find Rasuvo simple to use

In a study of 104 adult patients with RA, over 95% of patients reported no difficulties using Rasuvo. Rasuvo only needs to be injected once a week.

Once you start on Rasuvo, your doctor may adjust the amount one or more times to determine the right amount for you.



Patients have rated Rasuvo an average of **9.8** or higher on ease of use (1=very difficult and 10=very easy; range 8 to 10)



98% of patients had a positive overall impression of Rasuvo

Patients indicated one of the things they liked best about Rasuvo was that it was relatively pain free.

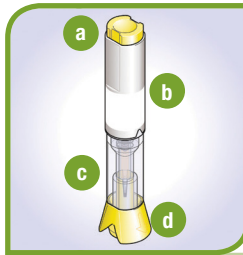


To learn more about Rasuvo, please visit www.rasuvo.com

Please see full Important Safety Information, including Boxed Warning, on pages 10-11. Please see Patient Information in pocket for complete information about Rasuvo.

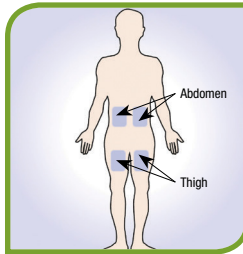
Rasuvo[™]
methotrexate
injection
Reliability Redefined

Rasuvo™ (methotrexate) injection instructions



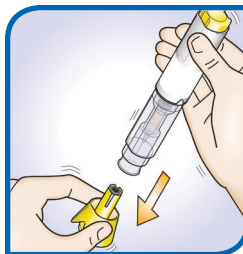
Parts of Rasuvo Auto-injector

- a) Yellow injection button
- b) Handling area
- c) Transparent control zone
- d) Yellow cap



Before using: Check Rasuvo before you inject it. The liquid inside the transparent control zone should be clear and yellow to brown in color and should not have any lumps or particles in it. **Do not** use Rasuvo if the liquid is cloudy, discolored, or contains particles.

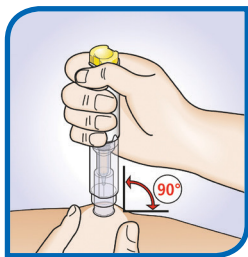
Wash your hands with soap and warm water, and wipe area to be injected with alcohol (abdomen or upper thighs). Do not inject within 2 inches of belly button.



1. Remove yellow cap

Hold the Rasuvo auto-injector with one hand, and use your other hand to pull the yellow cap straight off. (Do not twist the cap.)

The Rasuvo Disposal Program is a free program for patients to safely dispose of Rasuvo auto-injectors after use. To join, sign up online at www.rasuvo.com, or call 1-855-33MEDAC (6-3322).



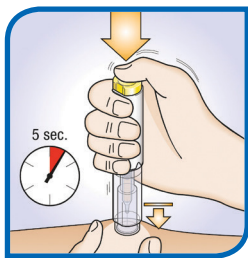
2. Prepare the injection

With your thumb and forefinger of your free hand, pinch a pad of skin surrounding the cleaned injection site by gently squeezing. Be sure to hold the skin pinched until Rasuvo is removed from the skin after the injection.

Position the uncapped transparent end of the Rasuvo auto-injector perpendicular (at a

90-degree angle) to the fold of skin.

Without pressing the button, push Rasuvo firmly onto your skin until you feel the stop point in order to unlock the yellow injection button.



3. Inject Rasuvo

While still holding Rasuvo firmly against pinched skin, press the yellow injection button with your thumb to inject.

Once you hear a click, which indicates start of injection, keep holding Rasuvo against the pinched skin until all of the medicine is injected. This can take up to **5 seconds**

(slowly count 1, 2, 3, 4, 5). Look at the transparent control zone while you are injecting to make sure that the entire dose is injected. When the movement stops, the injection is completed.

After completing injection, release skin and remove Rasuvo from skin by pulling straight up (perpendicular to the skin). If there is liquid left, contact your doctor or healthcare professional. Do not use another Rasuvo.

After using: After injection, the protective needle shield will automatically move into place and lock over the needle. Put Rasuvo in an FDA-cleared sharps disposal container (not household trash).



To learn more about using Rasuvo, please view the Rasuvo Administration Video or download a copy of the complete Rasuvo Injection Instructions at www.rasuvo.com.

Please see full Important Safety Information, including Boxed Warning, on pages 10-11. Please see Patient Information in pocket for complete information about Rasuvo.

Rasuvo[™]
methotrexate
injection
Reliability Redefined

Important Safety Information, Including Boxed Warning

What is Rasuvo (methotrexate) injection?

Rasuvo (methotrexate) injection is a single-dose auto-injector containing a prescription medicine, methotrexate. Methotrexate is used to:

- Treat certain adults with severe, active rheumatoid arthritis, and children with active polyarticular juvenile idiopathic arthritis (pJIA), after treatment with other medicines including non-steroidal anti-inflammatory (NSAIDs) have been used and did not work well.
- Control the symptoms of severe, resistant, disabling psoriasis in adults when other types of treatment have been used and did not work well.

Rasuvo should not be used for the treatment of cancer.

Rasuvo should not be used for the treatment of children with psoriasis.

Rasuvo is available in doses of 7.5, 10, 12.5, 15, 17.5, 20, 22.5, 25, 27.5, and 30 mg. Your doctor will prescribe a different way to take methotrexate if you need to take methotrexate by mouth or in some other way.

Important Safety Information, including Boxed Warning, for Rasuvo

What is the most important information I should know about Rasuvo?

This product includes the following Boxed Warning:

Rasuvo can cause serious side effects that can lead to death, including:

Organ system toxicity. People who use methotrexate for the treatment of cancer, psoriasis, or rheumatoid arthritis, have an increased risk of death from organ toxicity. Types of organ toxicity can include: gastrointestinal, nerve, bone marrow, lung, liver, kidneys, immune system, and skin.

Your doctor will do blood tests and other types of tests before you take and while you are taking Rasuvo to check for signs and symptoms of organ toxicity. Call your doctor right away if you have any of the following symptoms of organ toxicity: vomiting, neck stiffness, diarrhea, paralysis, mouth sores, irritability, fever, sleepiness, confusion, problems with coordination, weakness, dry cough, temporary blindness, trouble breathing, seizures, severe skin rash, headache, and back pain.

Women who are pregnant are at increased risk for death of the baby and for birth defects in the baby. Women who are pregnant or who plan to become pregnant must not take Rasuvo. A pregnancy test should be performed before starting Rasuvo. Contraception should be used by both females and males while taking Rasuvo. Pregnancy should be avoided if either partner is receiving Rasuvo:

- for a minimum of 3 months after treatment with Rasuvo for males.
- during and for at least 1 menstrual cycle after treatment with Rasuvo for females.

What are the possible side effects of Rasuvo?

Rasuvo may cause serious side effects, including:

Boxed Warning (continued)

- **Fertility problems.** Methotrexate, the active ingredient in Rasuvo, may affect your ability to have a baby. Males may have a decreased sperm count, and females may have changes to their menstrual cycle. This can happen while taking Rasuvo and for a short period of time after you stop.
- **Certain cancers.** Some people who have taken methotrexate have had a certain type of cancer called Non-Hodgkin's lymphoma and other tumors. Your doctor may tell you to stop taking Rasuvo if this happens.
- **Tissue and bone problems.** Taking methotrexate while having radiation therapy may increase the risk of your tissue or bone not receiving enough blood. This may lead to death of the tissue or bone.

Common side effects of Rasuvo include: nausea, stomach pain, indigestion (dyspepsia), mouth sores, and rash.

Who should not take Rasuvo?

Do not take Rasuvo if you:

- Are pregnant or planning to become pregnant
- Are breastfeeding; Rasuvo can pass into your breast milk and may harm your baby.
- Have alcohol problems (alcoholism)
- Have liver problems
- Have problems fighting infection (immunodeficiency syndrome)
- Have been told you have (or think you have) a blood disorder, such as low levels of white blood cells, red blood cells (anemia), or platelets
- Have had an allergy to methotrexate or any of the ingredients in Rasuvo

What should I tell my doctor before taking Rasuvo?

Before you take Rasuvo, tell your doctor if you have any other medical conditions. Tell your doctor about all of the medicines you take, including prescription medicines, over-the-counter medicines, vitamins, and herbal supplements.

Rasuvo may affect how other medicines work, and other medicines may affect how Rasuvo works, causing side effects. Ask your doctor or pharmacist for a list of medicines if you are not sure.

Tell your doctor if you have any side effect that bothers you or that does not go away. These are not all the possible side effects of Rasuvo. For more information, ask your doctor or pharmacist.

For additional information about Rasuvo, please refer to the Patient Information Leaflet and Instructions for Use, which can be found at www.rasuvo.com or call 1-855-33MEDAC (1-855-336-3322).

You are encouraged to report negative side effects of prescription drugs to the FDA. Visit www.fda.gov/medwatch, or call 1-800-FDA-1088.

Please see Patient Information in pocket for complete information about Rasuvo.

Rasuvo[™]
methotrexate
injection
Reliability Redefined

**CORE Connections:
The Rasuvo Patient Support Program**



Personalized Pharmacy Support: Providing patients with assistance obtaining Rasuvo through home delivery by our pharmacy partner



Administration Video: Developed to help patients learn how to self-inject



Co-pay Assistance: Savings on out-of-pocket expenses for eligible patients



Disposal Program: Free program for patients to safely dispose of Rasuvo after use



Patient Assistance Program: Helping eligible patients afford their Rasuvo prescription



Benefits Support: For help with insurance questions. Available at 1-855-33MEDAC (6-3322), 8:00 AM-8:00 PM ET Monday-Friday (excluding holidays)

To learn more about CORE Connections, please visit www.rasuvo.com.

Please see full Important Safety Information, including Boxed Warning, on pages 10-11. Please see Patient Information in pocket for complete information about Rasuvo.



Rasuvo is a trademark of Medac Pharma, Inc.
© 2014 Medac Pharma, Inc.

All rights reserved.



MP-Q214-021

September 2014